



REGIONAL SPECIALISED METEOROLOGICAL CENTRE -TROPICAL CYCLONES, NEW DELHI TROPICAL WEATHER OUTLOOK

DEMS-RSMC TROPICAL CYCLONES NEW DELHI DATED 24.07.2025

TROPICAL WEATHER OUTLOOK FOR THE NORTH INDIAN OCEAN (THE BAY OF BENGAL OF BENGAL AND THE ARABIAN SEA) VALID FOR THE NEXT 168 HOURS ISSUED AT 0600 UTC OF 24.07.2025 BASED ON 0300 UTC OF 24.07.2025.

BAY OF BENGAL:

The upper air cyclonic circulation (Remnant of Tropical Cyclone WIPHA) emerged over North Bay of Bengal and under its influence a Low Pressure area formed over the same region at 0000 UTC. It persisted over the same region at 0300 UTC of today, the 24th July 2025. It is likely to move west-northwestwards and become a Well Marked low pressure Area over Northwest Bay of Bengal and adjoining West Bengal and Bangladesh coasts during next 24 hours. It is likely to continue to move west-northwestwards towards West Bengal & North Odisha coasts during subsequent 48 hours.

Associated scattered to broken low and medium clouds with embedded intense to very intense convection lay over north and central Bay of Bengal. The minimum cloud top temperature is minus 70 to 90 deg. Celsius.

Scattered to broken low and medium clouds with embedded intense to very intense convection lay over north and central Bay of Bengal, north Andaman Sea, Arakan coast and gulf of Martaban. Scattered low and medium clouds with embedded moderate to intense convection lay over south Bay of Bengal and south Andaman sea.

*PROBABILITY OF CYCLOGENESIS (FORMATION OF DEPRESSION) DURING NEXT 168 HRS:

24 HOURS	24-48 HOURS	48-72 HOURS	72-96 HOURS	96-120 HOURS	120-144 HOURS	144-168 HOURS
NIL	LOW	MOD	MOD	NIL	NIL	NIL

*NOTE: EVERY 24HR FORECAST IS VALID UPTO 0300 UTC (0830 IST) OF NEXT DAY

ARABIAN SEA:

Scattered low and medium clouds with embedded moderate to intense convection lay over eastcentral and southeast Arabian Sea, Lakshadweep Islands area, Maldives & Comorin Area. Scattered low and medium clouds with embedded weak to moderate convection lay over rest of the Arabian Sea, gulf of Kutch and gulf of Cambay.

*PROBABILITY OF CYCLOGENESIS (FORMATION OF DEPRESSION) DURING NEXT 168 HRS:

24 HOURS	24-48 HOURS	48-72 HOURS	72-96 HOURS	96-120 HOURS	120-144 HOURS	144-168 HOURS
NIL	NIL	NIL	NIL	NIL	NIL	NIL

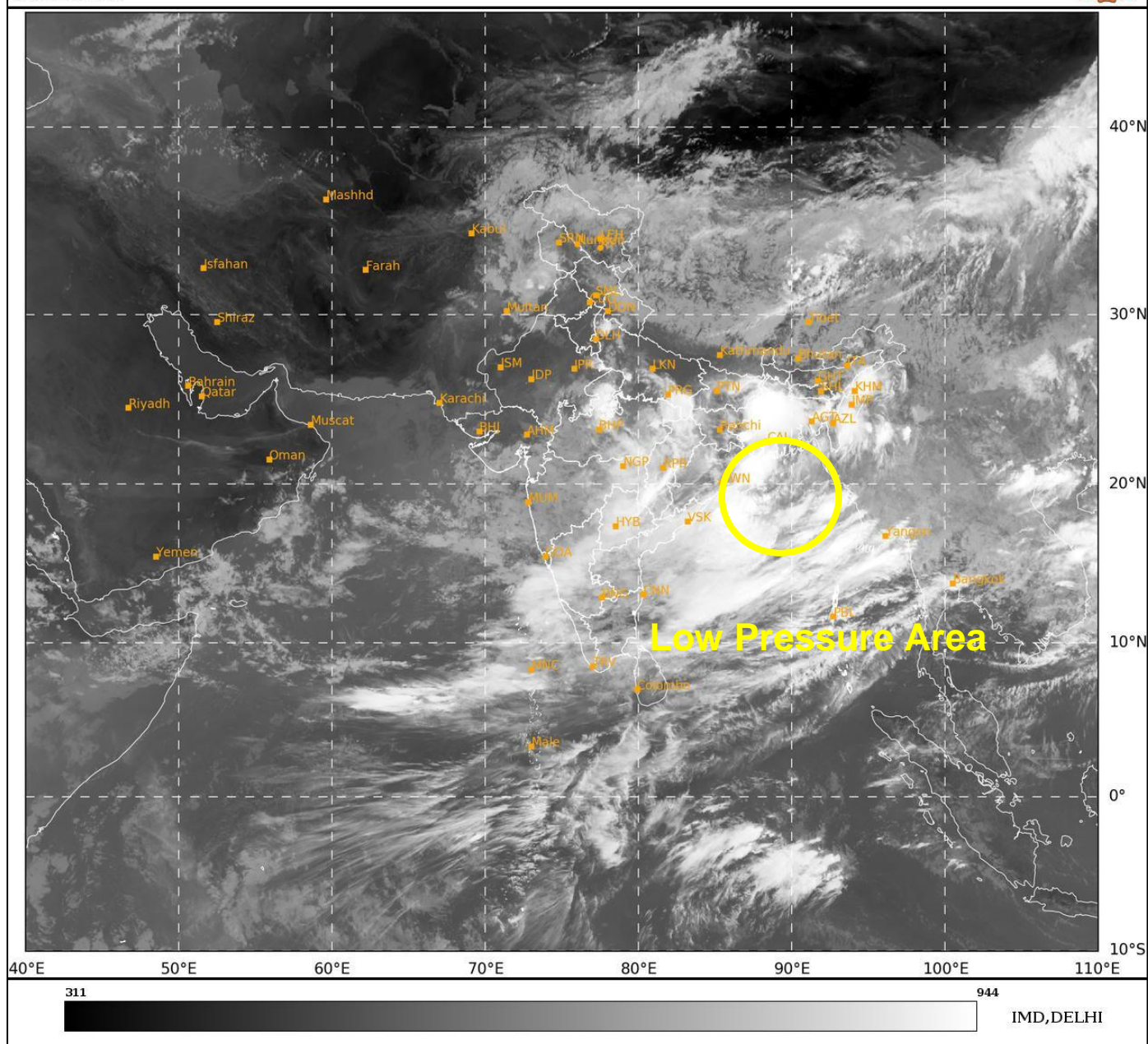
*NOTE: EVERY 24HR FORECAST IS VALID UPTO 0300 UTC (0830 IST) OF NEXT DAY

REMARKS: NIL

Cloud distribution: (a) Isolated: <25%, Scattered:25-50%, Broken: 51-75%, Solid:>75%, Convection Intensity: (a) Weak: Cloud Top Temperature(CTT)>-25°C,(b)Moderate:CTT:-25°Cto-40°C,(c)Intense:CTT: -41°Cto -70°Cand(d)Very Intense::Less than -70°C
PROBABILITYOFCYCLOGENESIS(FORMATIONOFDEPRESSION):NIL:0%,LOW:1-33%,MODERATE:34-66%ANDHIGH:67-100%
ThisisaguidanceBulletinforWMO/ESCAPPanelMembercountries.VisitrespectiveNationalwebsitesforCountryspecificBulletins

SAT : INSAT-3DR IMG
 IMG_TIR1 10.8 um
 L1C Mercator

24-07-2025/(0415 to 0442) GMT
 24-07-2025/(0945 to 1012) IST



Cloud distribution: (a) Isolated: <25%, Scattered:25-50%, Broken: 51-75%, Solid:>75%, Convection Intensity: (a) Weak: Cloud Top Temperature(CTT)>-25°C,(b)Moderate:CTT:-25°Cto-40°C,(c)Intense:CTT: -41°Cto -70°Cand(d)Very Intense::Less than -70°C
 PROBABILITY OF CYCLOGENESIS (FORMATION OF DEPRESSION): NIL:0%, LOW:1-33%, MODERATE:34-66% AND HIGH:67-100%
 This is a guidance Bulletin for WMO/ESCAP Panel Member countries. Visit respective National websites for Country specific Bulletins